

CAPITAL EQUIPMENT GROUP

PROFILE

2021




Invicta
HOLDINGS LIMITED



CAPITAL EQUIPMENT GROUP a division of (INVICTA HOLDINGS LTD)



Invicta Holdings Limited is a South African-based investment management and holding company of the Capital Equipment Group (CEG) and Engineering Solutions Group (ESG).

Invicta, listed on the JSE in 1989, is a symbol of ingenuity, constantly growing and adapting to meet market demands. It is the only JSE listed company to achieve Top 100 Performers status for 20 consecutive years - and be ranked in the elite Top 20 Companies.



ABOUT CEG

The Capital Equipment Group (CEG) consists of local and international companies and divisions which operate in the supply of construction and forklift equipment with a strong spare parts base.

The unique and participative style of management contributes to the development of group employees and creates equal opportunities for growth and progress, based on ability and merit, irrespective of race, colour or creed. All business units are supported and enhanced by strong, centralised services such as finance, administration, legal, merchandising, transport, training and human resources.

As an organisation that imports and supplies earthmoving and forklift equipment through a variety of divisional outlets, the management and employees are committed to continually maintain the ISO 9001-2008 Quality standard and the OHSAS 18001 Health and Safety Management System.

This ensures that the company provides its customers with quality services and support at all times.



TONY SINCLAIR
CEO



MALO MASSYN-LA GRANGE
CFO

CEG MISSION

CEG is a South African company providing Capital Equipment vital to sustaining the construction and materials-handling industries in South Africa.

Its mission is to become the supplier of choice within its relevant industries, thereby creating superior value for shareholders, customers and employees.



CEG VISION

CEG's vision is to be the supplier of choice for capital equipment and spare parts in Southern Africa, which means:

- Customers prefer us as their supplier;
- CEG has the respect of its competitors;
- Employees are proud to be associated with the company; and
- CEG can produce the required returns to shareholders.

The strategic intent of the company is to increase the size of our business by acquiring further franchises and businesses which will fit into the business culture in order to increase returns to shareholders whilst maintaining adequate working capital.

MESSAGE FROM OUR LEADER



Tony Sinclair

“Without continual growth, evolution and progress, such words as improvement, achievement and success have no meaning”

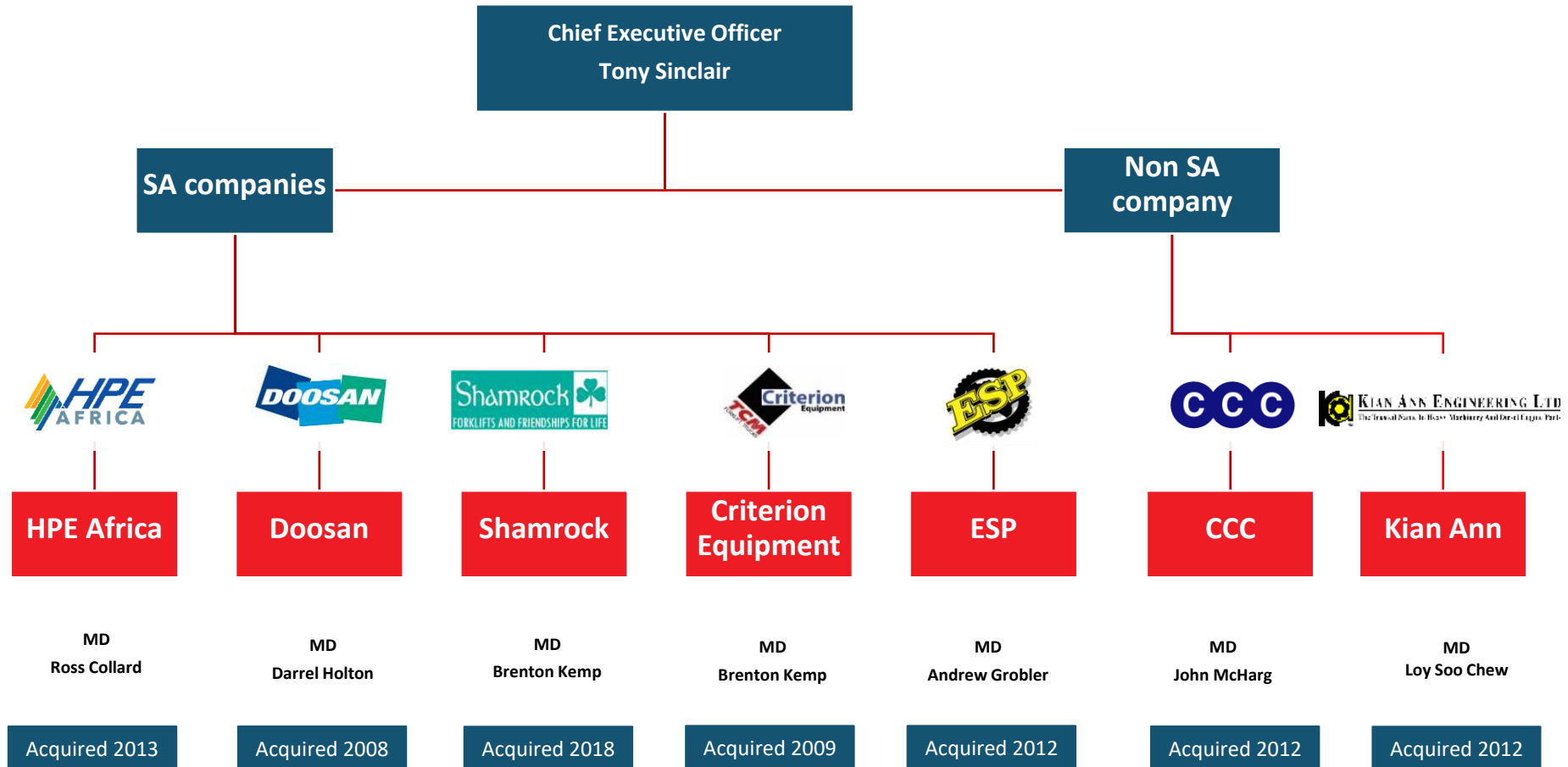
We have witnessed rapid changes in our societal and economic circumstances in the past 12 months. It was a time filled with challenges and victories requiring each one of us to adapt and evolve.

The CEG team responded to these challenges with agility, flexibility and resilience. All of us are committed to upholding our group’s reputation to supply world-class capital equipment and offer superior parts availability and expert technical support.

We constantly work to meet and exceed the expectations of all stakeholders and to protect their interests.

Our focus is to develop and expand our range of brands to maintain stability in these uncertain times.

GROUP STRUCTURE



OUR BRANDS



HYUNDAI
CONSTRUCTION EQUIPMENT



DOOSAN



TCM



KIAN ANN ENGINEERING LTD
The Trusted Name In Heavy Machinery And Diesel Engine Parts



SCOSAN
HEAVY INDUSTRIES



EVERDIGM

ESP
CCC

Shamrock
FORKLIFTS AND FRIENDSHIPS FOR LIFE



MOFFETT



COMBiLiFT
LIFTING INNOVATION



agrimac

WHAT WE DO

CEG group of companies are importers and distributors of capital equipment and industrial consumables (Spare Parts), providing aftermarket and technical support for all the capital equipment it sells.

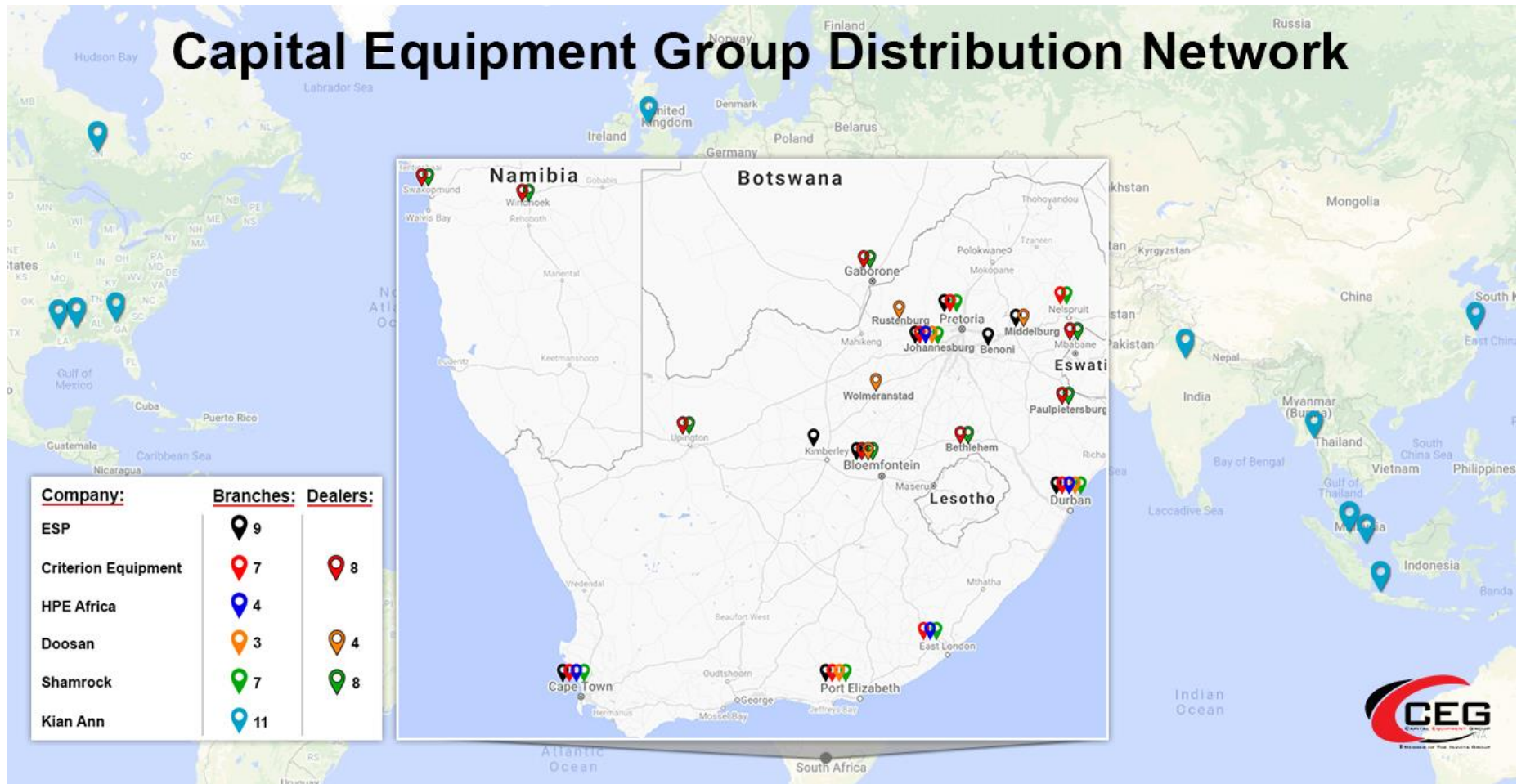
The represented brands are world renowned and imported from many different countries around the world. A big focus of the group is to source quality alternate parts to ensure we can continue to supply our customers with competitively priced quality products.

We distribute and support the products we sell through a company owned branch network of 30 outlets and a further 20 Dealers in South Africa.



OUR DISTRIBUTION NETWORK

Capital Equipment Group Distribution Network



CONTACT DETAILS



105 Andre Greyvensteyn avenue, Spartan, 1619



011 922 2050



info@ceggroup.co.za



www.capitalequipment.co.za